

NT50/MCR SLC

ES

Montaje: Adosable.

Fuente de luz: Módulos lineales LED SMD LED.
Temperatura de color 4000K.

Sistema óptico: NT50/MCR: Difusor microprismático.

Distribución luminosa: Directa.

Equipo eléctrico: Equipo de control electrónico TRIDONIC, PF>0,95.
Disponible, regulable 1-10V o DALI y/o kit de emergencia (1-3 h).

Materiales: Cuerpo: Perfil de aluminio extruido.

Acabado: Aluminio RAL 9006.



EN

Mounting: Surface.

Light source: LED linear modules SMD.
Temperature color 4000K.

Optical system: NT50/MCR: Microprismatic diffuser.

Light distribution: Direct.

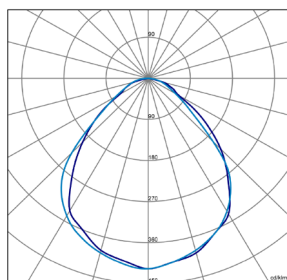
Electrical equipment: Tridonic Electronic control gear PF>0,95.
Available, dimmable 1-10V or DALI and/or emergency Kit (1-3 h).

Materials: Body: Extruded aluminum profile.

Surface finish: Aluminium RAL 9006.



NT50/MCR-SLC-1411-40W



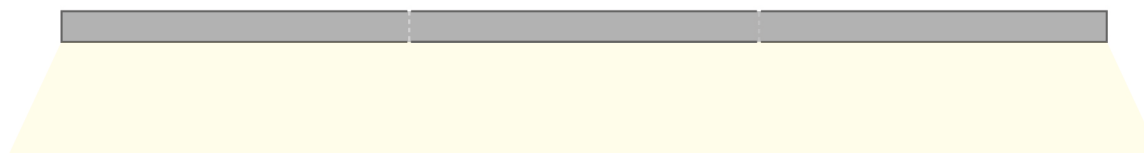
NT50/MCR-SLC



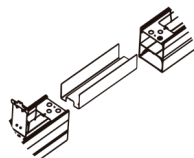
DISPONIBLE SET DE SUSPENSION
SUSPENSION SET AVAILABLE

Incluye electrificación para montaje de líneas continuas

Electrification for continuous lines assembly included

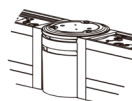


Unión para
líneas continuas

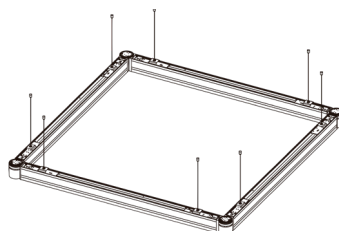
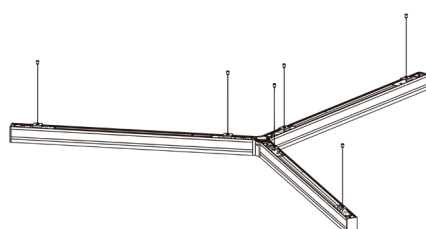
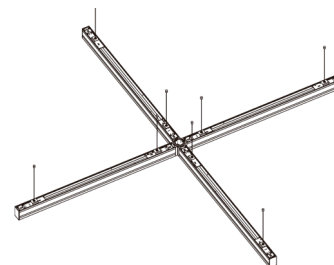
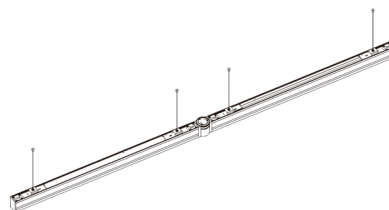


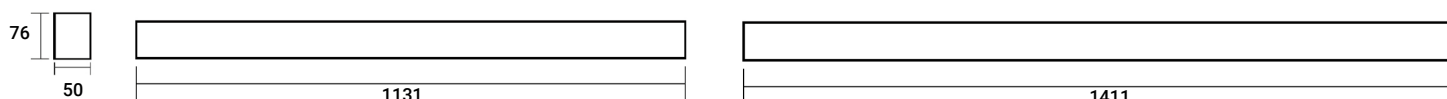
To attach
continuous lines

Para montajes
especiales



For special
assemblies





ESTANDAR/STANDARD

- 5 AÑOS
5 YEARS
- 220-240V
50-60Hz
- IP 20
- IK 02
- CLASE I
CLASS I
- 50.000h
L80B10
- 20°
+35°
- CRI 80

DISPONIBLE/AVAILABLE

- DALI
- EMERGENCY
1h
3h

CONFIGURACION ONLINE
ONLINE CONFIGURATION



Código Code	Referencia Reference	Kg	Potencia Power	Lúmenes Lumens	Eficiencia Efficiency	CCT (K)
N50343K4L	NT50/MCR/SLC-1131-32W 3400lm/840	2,0	32W	3400	107 lm/W	4000
N50444K3L	NT50/MCR/SLC-1411-40W 4300lm/840	2,5	40W	4300	108 lm/W	4000

ACCESORIOS DISPONIBLES/AVAILABLE ACCESSORIES

- REGULACION/DIMING 1-10V | DALI
- KIT DE EMERGENCIA/EMERGENCY KIT 1h | 3h
- SET DE SUSPENSION/SUSPENSION SET
- UNION ANGULAR 4X NT50
- FLORON DECORATIVO/DECORATIVE CEILING BASE
- UNION LC NT50
- UNION ANGULAR 2X NT50
- UNION ANGULAR 3X NT50